

♩ = 196

System 1 (measures 1-6). Treble clef: Dense chords, mostly triads and dyads, some with ledger lines. Bass clef: Simple bass line with quarter and eighth notes.

7

System 2 (measures 7-12). Treble clef: More active lines, including eighth and sixteenth notes. Bass clef: Continues the bass line with quarter and eighth notes.

13

System 3 (measures 13-18). Treble clef: More complex patterns, including eighth and sixteenth notes. Bass clef: Some rests, then continues with quarter and eighth notes.

19

System 4 (measures 19-25). Treble clef: More complex patterns, including eighth and sixteenth notes. Bass clef: Some rests, then continues with quarter and eighth notes.

26

System 5 (measures 26-31). Treble clef: More complex patterns, including eighth and sixteenth notes. Bass clef: Some rests, then continues with quarter and eighth notes.

32

System 6 (measures 32-37). Treble clef: More complex patterns, including eighth and sixteenth notes. Bass clef: Some rests, then continues with quarter and eighth notes.

38

45

51

57

62

68

The image displays a page of musical notation, likely for a piano piece, consisting of six systems of staves. Each system typically includes a grand staff (treble and bass clefs) and a single bass staff. The notation is written in black ink on a white background. The page is numbered 38 at the top left and 2 at the bottom left. The music features various note values, rests, and dynamic markings, including accents and slurs. The notation is complex, with many beamed notes and rests, suggesting a fast or intricate piece. The systems are numbered 38, 45, 51, 57, 62, and 68, indicating the starting measure of each system. The notation is written in a standard musical notation style, with treble and bass clefs, and various note values and rests.

73

System 1 (measures 73-78): Treble staff contains eighth and quarter notes, mostly with accents. Bass staff contains chords and single notes, with some rests.

79

System 2 (measures 79-83): Treble staff continues with eighth and quarter notes. Bass staff features chords and single notes, with some rests.

84

System 3 (measures 84-89): Treble staff includes some beamed eighth notes. Bass staff contains chords and single notes, with some rests.

91

System 4 (measures 91-97): Treble staff features a mix of eighth and quarter notes. Bass staff contains chords and single notes, with some rests.

98

System 5 (measures 98-102): Treble staff includes a triplet of eighth notes. Bass staff contains chords and single notes, with some rests.

103

System 6 (measures 103-107): Treble staff includes a key signature change to one sharp (F#) in measure 107. Bass staff contains chords and single notes, with some rests.

109

System 109-113: Treble and bass staves. Treble clef has a key signature of one flat. The system contains five measures. The bass line features chords and single notes, including a whole note chord in the final measure.

114

System 114-118: Treble and bass staves. The system contains five measures. The treble line has a melodic line with eighth and sixteenth notes. The bass line has chords and single notes.

119

System 119-123: Treble and bass staves. The system contains five measures. The treble line has a melodic line with eighth and sixteenth notes. The bass line has chords and single notes.

124

System 124-129: Treble and bass staves. The system contains six measures. The treble line has a melodic line with eighth and sixteenth notes. The bass line has chords and single notes, including a key signature change to two flats in the final measure.

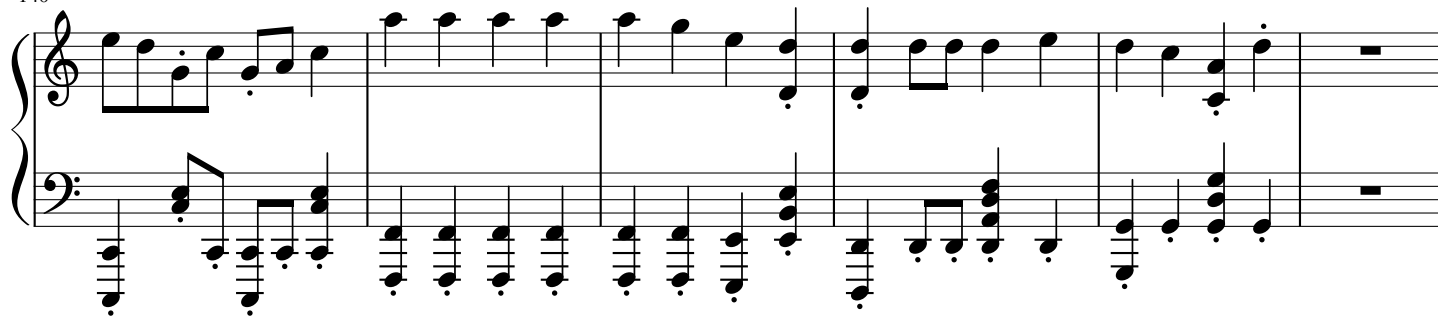
130

System 130-134: Treble and bass staves. The system contains five measures. The treble line has a melodic line with eighth and sixteenth notes. The bass line has chords and single notes.

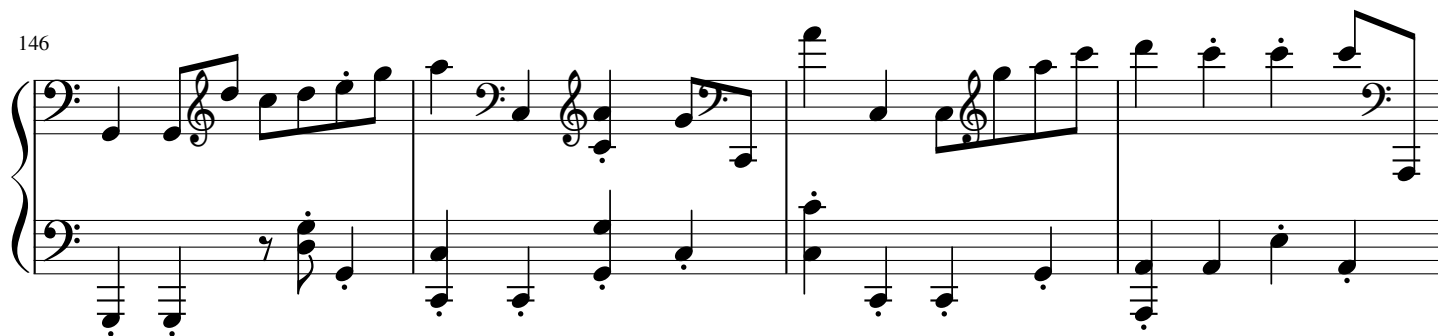
135

System 135-139: Treble and bass staves. The system contains five measures. The treble line has a melodic line with eighth and sixteenth notes. The bass line has chords and single notes.

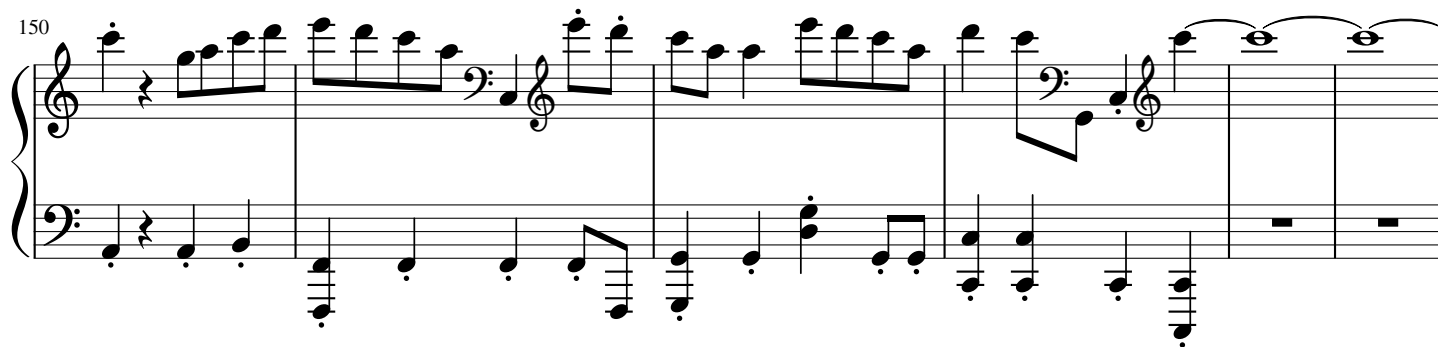
140



146



150



156

